

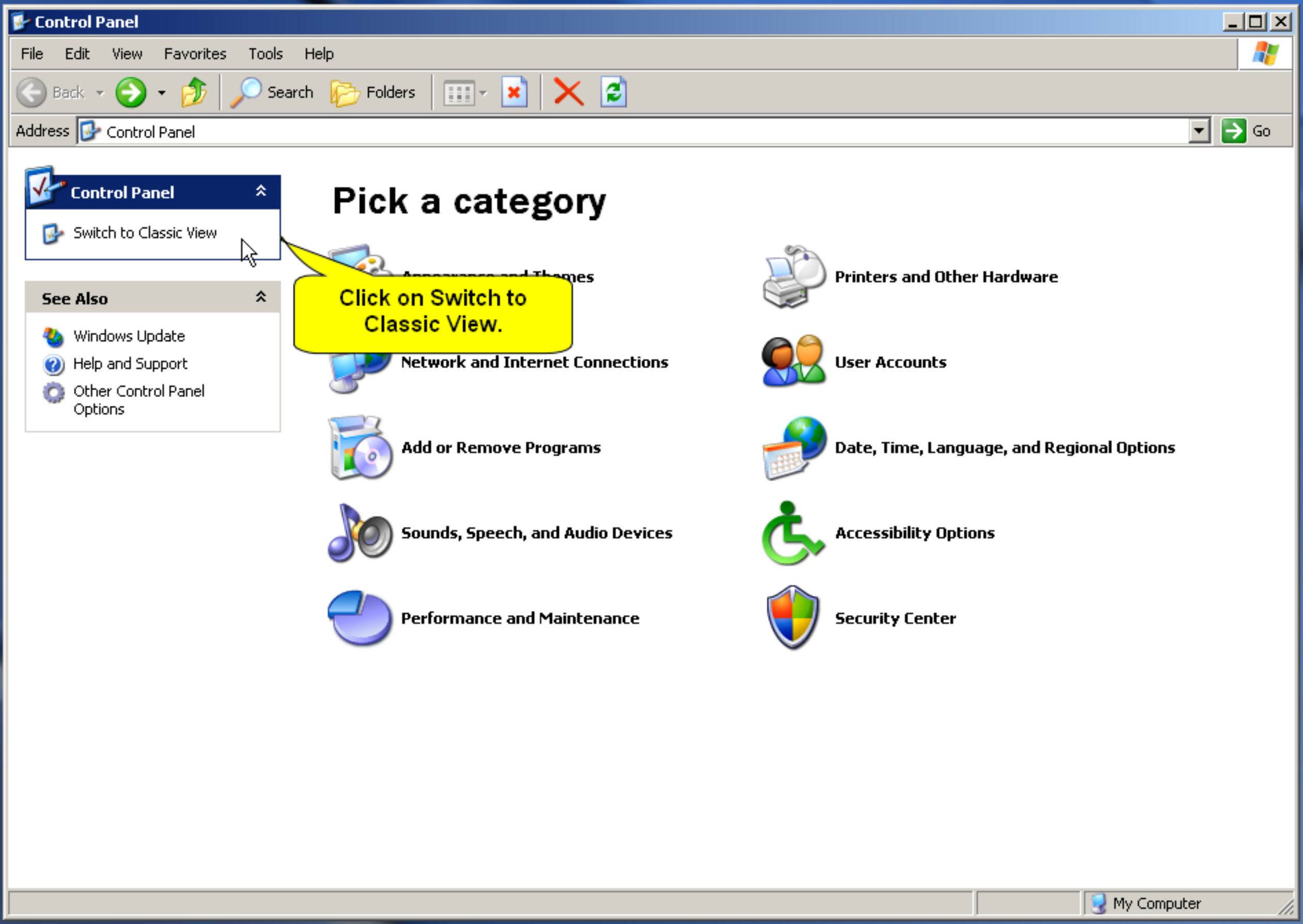
Windows XP Static IP Setup Guide

**To get started: Click Start, Then Click
on Control Panel in the right column.**



**NOTE: DSL customers and some Fort Loramie
customers are required a static IP. All other
customers will use DHCP. Continue to next
screen to setup Static IP.**





Control Panel

Switch to Classic View

Pick a category

Click on Switch to Classic View.

See Also

- Windows Update
- Help and Support
- Other Control Panel Options

Appearance and Themes

Network and Internet Connections

Add or Remove Programs

Sounds, Speech, and Audio Devices

Performance and Maintenance

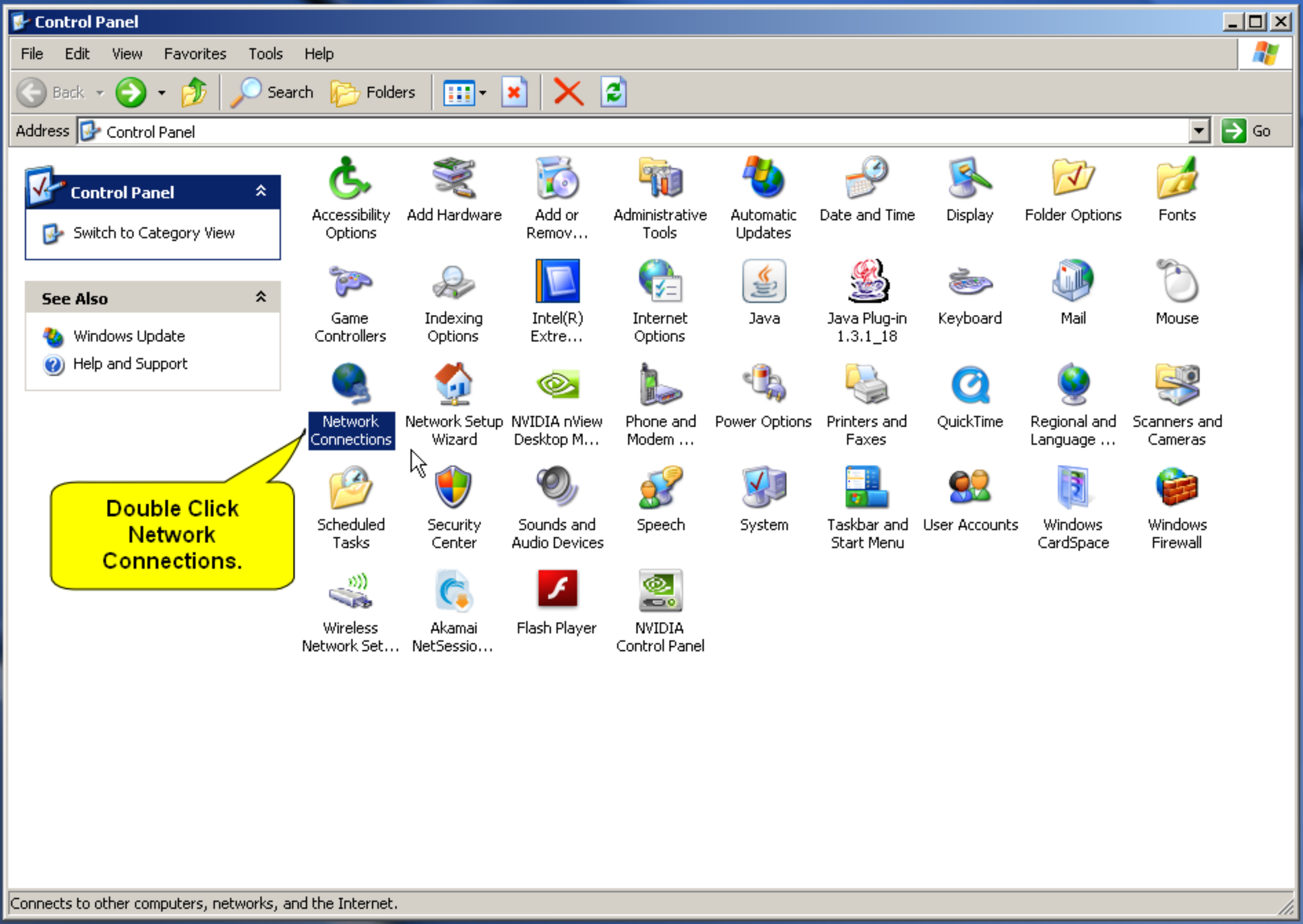
Printers and Other Hardware

User Accounts

Date, Time, Language, and Regional Options

Accessibility Options

Security Center



Control Panel

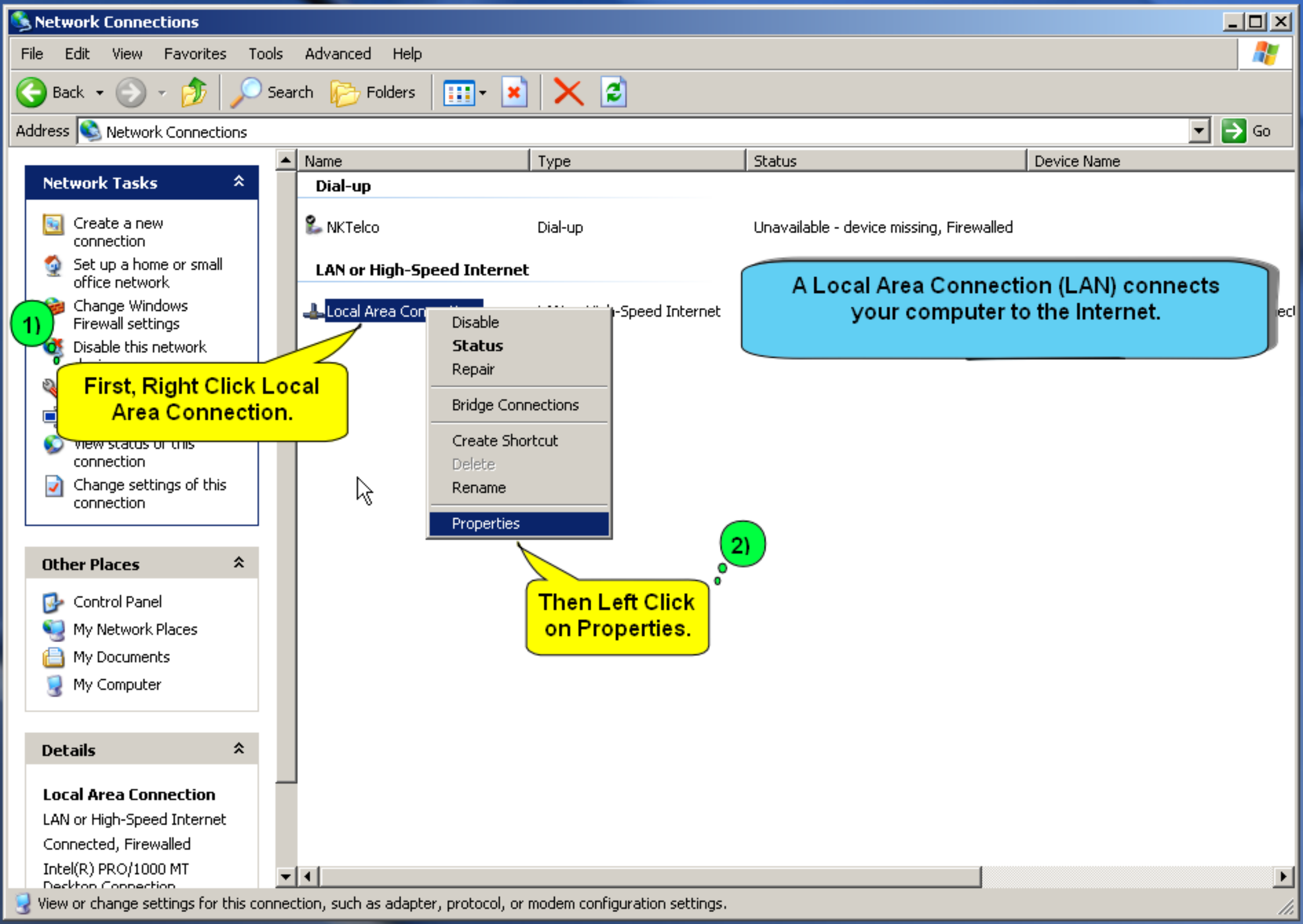
Switch to Category View

See Also

- Windows Update
- Help and Support

- | | | | | | | | | |
|-------------------------|----------------------|---------------------------|----------------------|-------------------|------------------------|---------------|---------------------------|----------------------|
| Accessibility Options | Add Hardware | Add or Remov... | Administrative Tools | Automatic Updates | Date and Time | Display | Folder Options | Fonts |
| Game Controllers | Indexing Options | Intel(R) Extre... | Internet Options | Java | Java Plug-in 1.3.1_18 | Keyboard | Mail | Mouse |
| Network Connections | Network Setup Wizard | NVIDIA nView Desktop M... | Phone and Modem ... | Power Options | Printers and Faxes | QuickTime | Regional and Language ... | Scanners and Cameras |
| Scheduled Tasks | Security Center | Sounds and Audio Devices | Speech | System | Taskbar and Start Menu | User Accounts | Windows CardSpace | Windows Firewall |
| Wireless Network Set... | Akamai NetSessio... | Flash Player | NVIDIA Control Panel | | | | | |

Double Click Network Connections.



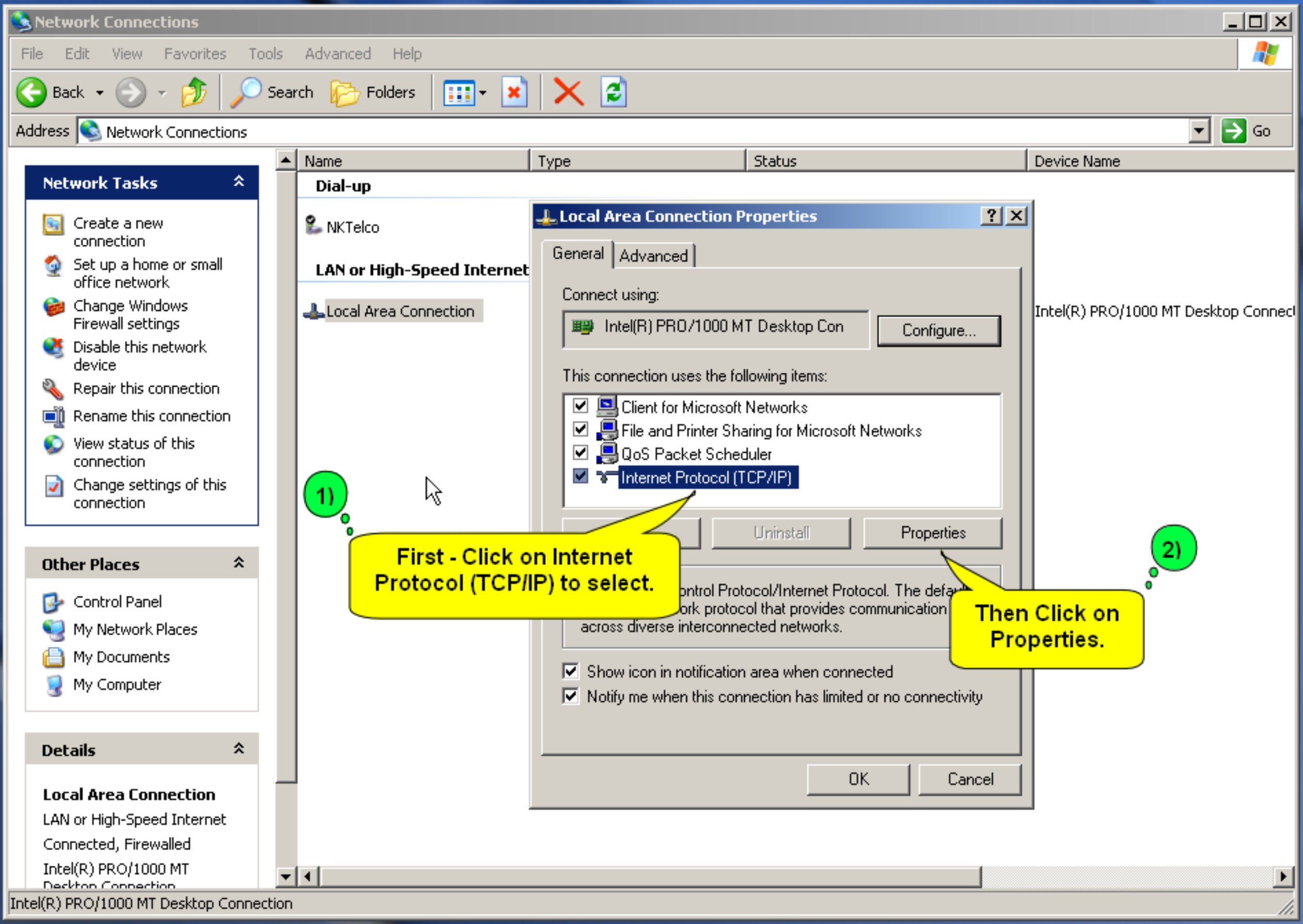
1)

First, Right Click Local Area Connection.

2)

Then Left Click on Properties.

A Local Area Connection (LAN) connects your computer to the Internet.

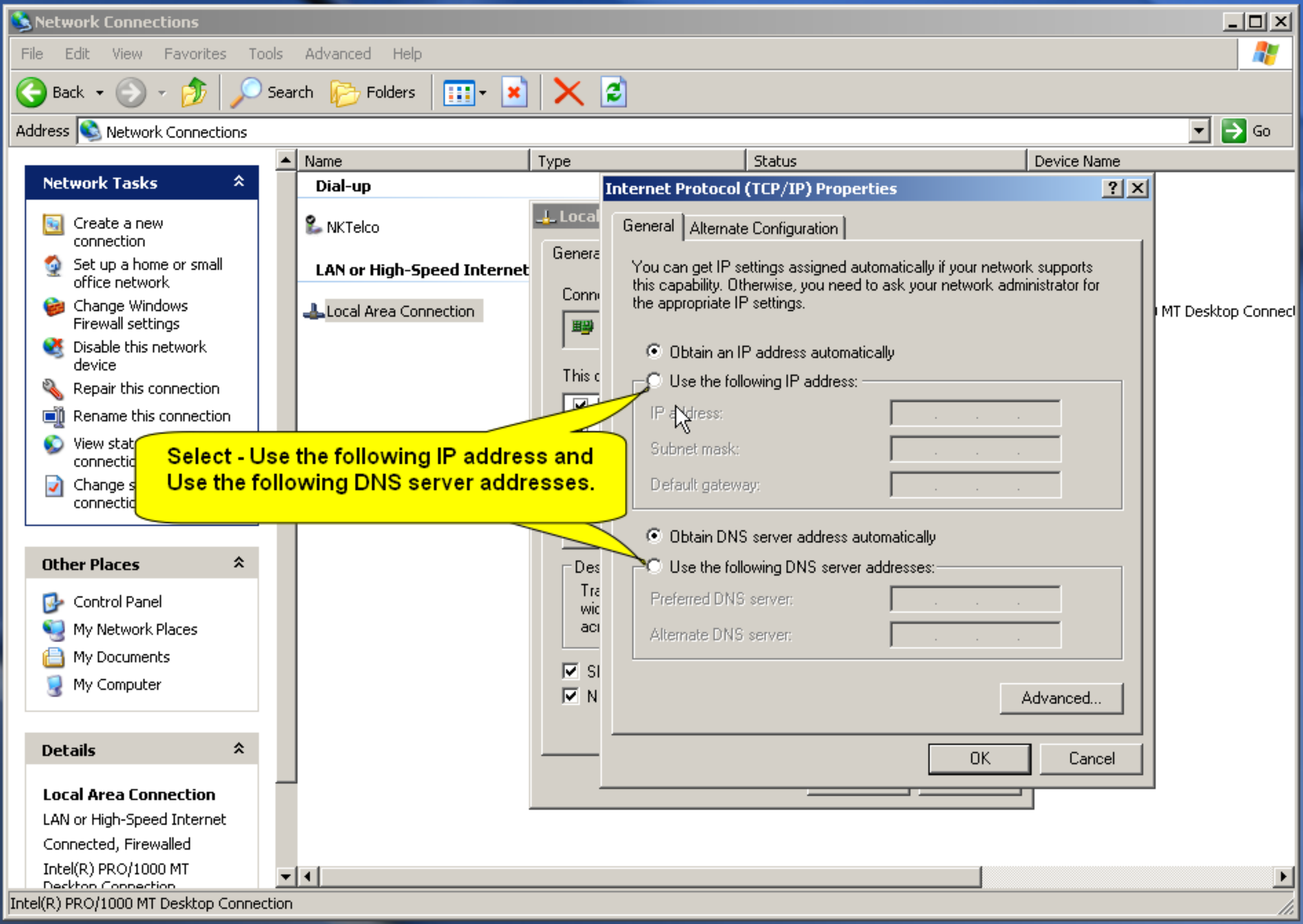


1)

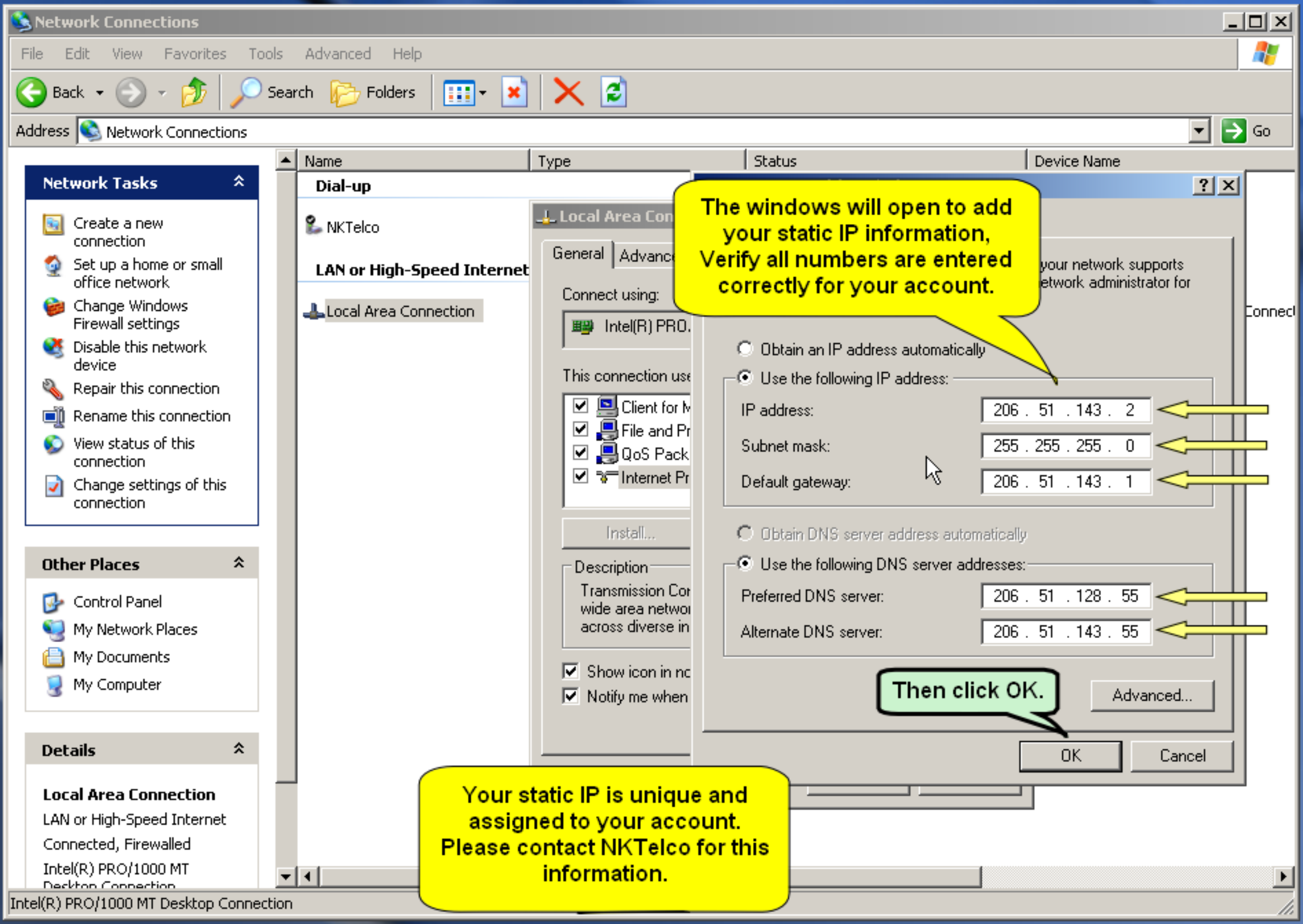
First - Click on Internet Protocol (TCP/IP) to select.

2)

Then Click on Properties.



Select - Use the following IP address and Use the following DNS server addresses.



The windows will open to add your static IP information, Verify all numbers are entered correctly for your account.

Then click OK.

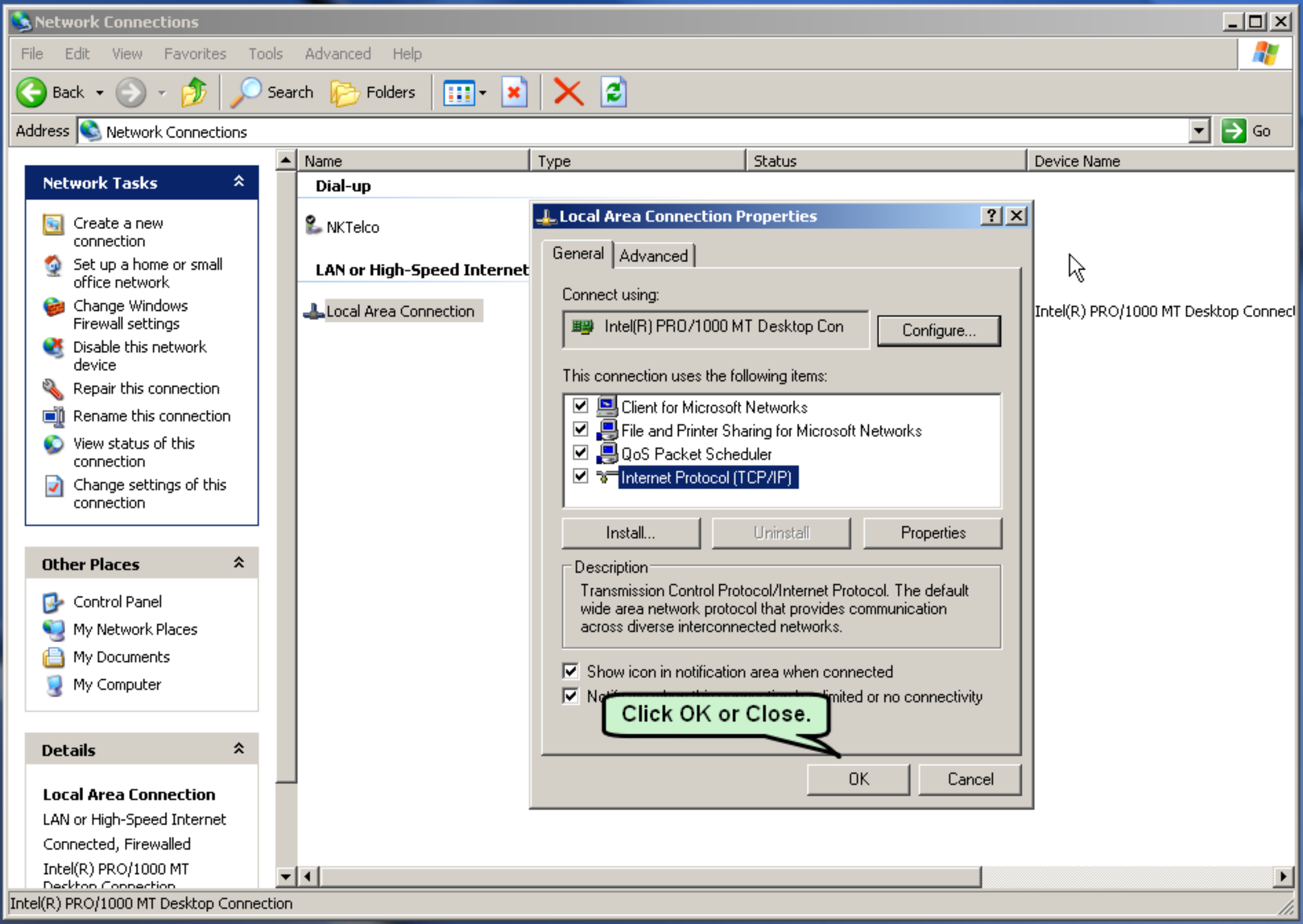
Your static IP is unique and assigned to your account. Please contact NKTelco for this information.

- Network Tasks
 - Create a new connection
 - Set up a home or small office network
 - Change Windows Firewall settings
 - Disable this network device
 - Repair this connection
 - Rename this connection
 - View status of this connection
 - Change settings of this connection

- Other Places
 - Control Panel
 - My Network Places
 - My Documents
 - My Computer

Details

Local Area Connection
LAN or High-Speed Internet
Connected, Firewalled
Intel(R) PRO/1000 MT Desktop Connection



Name	Type	Status	Device Name
------	------	--------	-------------

Dial-up

NKTelco

LAN or High-Speed Internet

Local Area Connection

Local Area Connection Properties

General Advanced

Connect using:

Intel(R) PRO/1000 MT Desktop Con Configure...

This connection uses the following items:

- Client for Microsoft Networks
- File and Printer Sharing for Microsoft Networks
- QoS Packet Scheduler
- Internet Protocol (TCP/IP)**

Install... Uninstall Properties

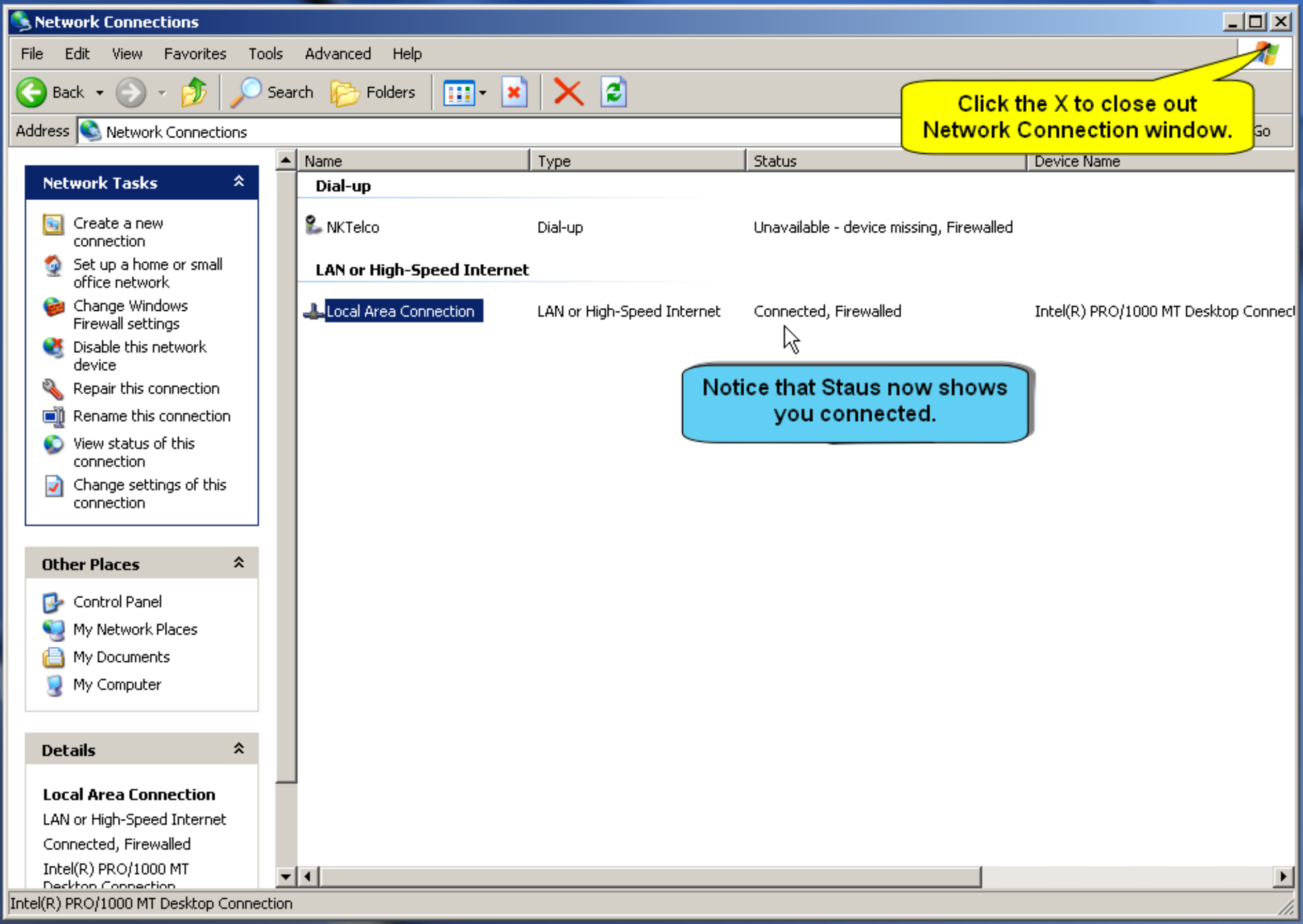
Description

Transmission Control Protocol/Internet Protocol. The default wide area network protocol that provides communication across diverse interconnected networks.

- Show icon in notification area when connected
- Notify when connection is limited or no connectivity

Click OK or Close.

OK Cancel



Click the X to close out Network Connection window.

Notice that Staus now shows you connected.

- Network Tasks**
- Create a new connection
 - Set up a home or small office network
 - Change Windows Firewall settings
 - Disable this network device
 - Repair this connection
 - Rename this connection
 - View status of this connection
 - Change settings of this connection

- Other Places**
- Control Panel
 - My Network Places
 - My Documents
 - My Computer

Details

Local Area Connection
LAN or High-Speed Internet
Connected, Firewallled
Intel(R) PRO/1000 MT Desktop Connection

Name	Type	Status	Device Name
Dial-up			
NKTelco	Dial-up	Unavailable - device missing, Firewallled	
LAN or High-Speed Internet			
Local Area Connection	LAN or High-Speed Internet	Connected, Firewallled	Intel(R) PRO/1000 MT Desktop Connection



nktelco.net
Delivering Tomorrow's Technology...Today!

Open your internet browser to test the internet.

Stay updated on

Your home page will open. You are now connected to the internet.

Welcome To NKTelco

Communication in a tech-sawy world is an essential for everyone, whether you're at home or in the office. That's why at NKTelco we are committed to providing high-quality services at the best possible price. As the pace of change in communications and technology continues to set record highs, NKTelco has positioned itself to exceed those innovations. NKTelco will deliver cutting-edge solutions for your home or business to ensure you're always connected and in-touch with the outside world. For all of your communication needs, think NKTelco.

NEXT ▶

